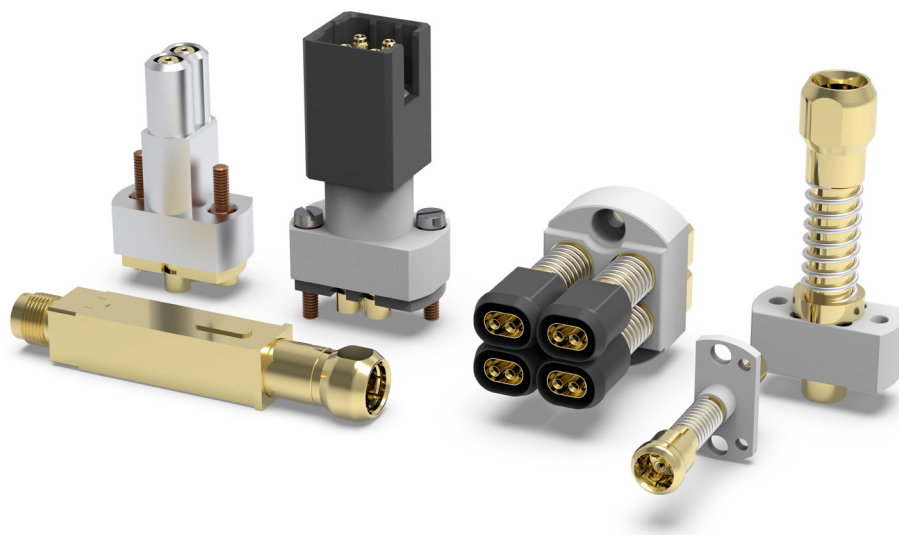


# PRODUKTPORTFOLIO CONTACT PROBES FOR HIGH FREQUENCY MEASUREMENTS

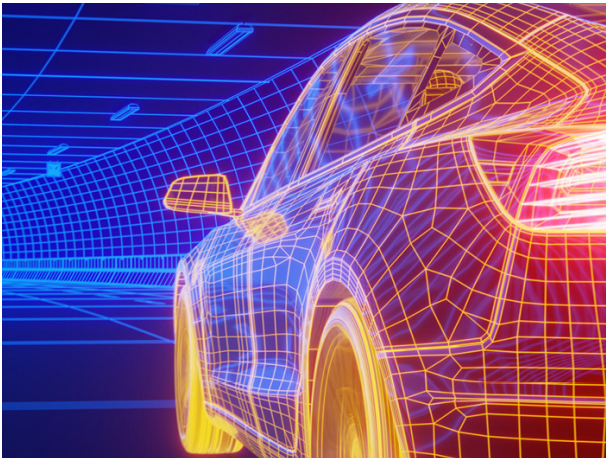


Version 1

**FEINMETALL**  
Contact Technologies



## APPLICATION AREAS FOR RF CONTACT PROBES

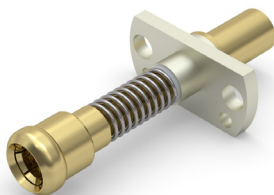


### **Automotive**

For reliable testing and contacting of onboard system components.



## HF66

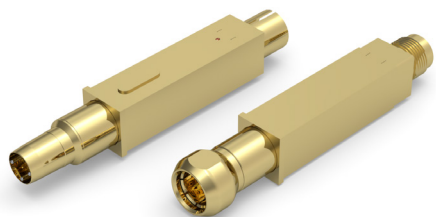


### HF66 for contacting Fakra-Male

#### Innovative solution for Fakra-male

- Up to 6Ghz
- Wobbling-function to compensate misalignments
- Reduces stress and wear-off on the DUT
- Easy mounting via flange
- Inner pin changeable for better lifetime
- Matching cables available (MCX-connection)
- Product video available

## HF819

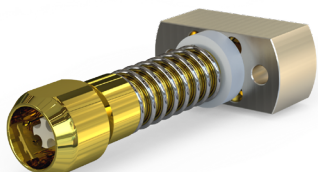


### HF819 for HSD

#### Proven and solid design

- Family specially designed for HSD-connectors
- Up to 3Ghz
- Mounting via press-fit (no receptacle needed)
- Inner pins changeable for better lifetime
- Many different connection options (plug/screw/direct attach)
- Versions for Male and Female available

## HF829



### HF829 for contacting HSD-Male

#### Innovative solution for HSD-male

- New innovation by Feinmetall
- Up to 3Ghz
- Mounting via flange
- Inner pins changeable for better lifetime
- HSD-interface for best RF-performance
- Versions for Male and Female available

## HF77

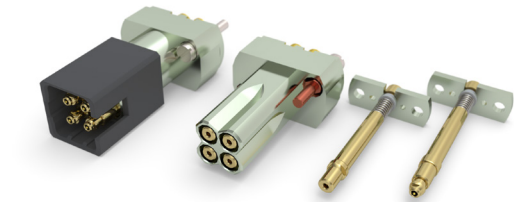


### HF77 for contacting H-MTD

#### Perfect solution for single or quad H-MTD male

- Up to 14Ghz
- Wobbling-function to compensate misalignments
- Easy mounting via flange (front/back)
- Inner pin changeable
- Cables are getting secured with a screw
- Matching cables available
- Versions for Single- and Quad-connectors available
- Product video available

## HF77

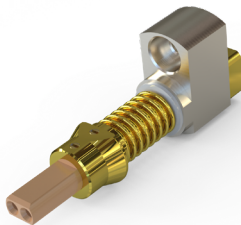


### HF77 for contacting HFM and MateAX

#### Proven and sophisticated probes!

- Up to 12Ghz
- Wobbling-function to compensate misalignments (probes and housing can wobble)
- Flexible mounting via flange (front/back)
- Inner pin changeable for better lifetime
- Versions for Male and Female available
- Matching cables available (mSMP-connection)
- Product video available

## HF77

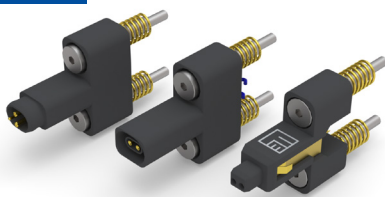


### HF77 for contacting MATenet

#### Perfect solution for MATenet

- Up to 2Ghz
- Wobbling-function to compensate misalignments
- Designed for smallest possible pitch to contact on all housing types
- Easy mounting via flange (front/back)
- Inner pin + insulation changeable
- Cables are getting secured with a screw
- H-MTD interface

## TC77



### TC77 for electrical test of automotive connectors

#### Clever and cost-effective

- Designed for electrical test
- Wobbling-function for longer lifetime
- Connection via soldering or cable
- Ground and signal are contacted for a perfect transmission
- Mounting via flange
- Available for MATenet, H-MTD-Male and H-MTD-Female

## RF CONTACT PROBES FOR AUTOMOTIV

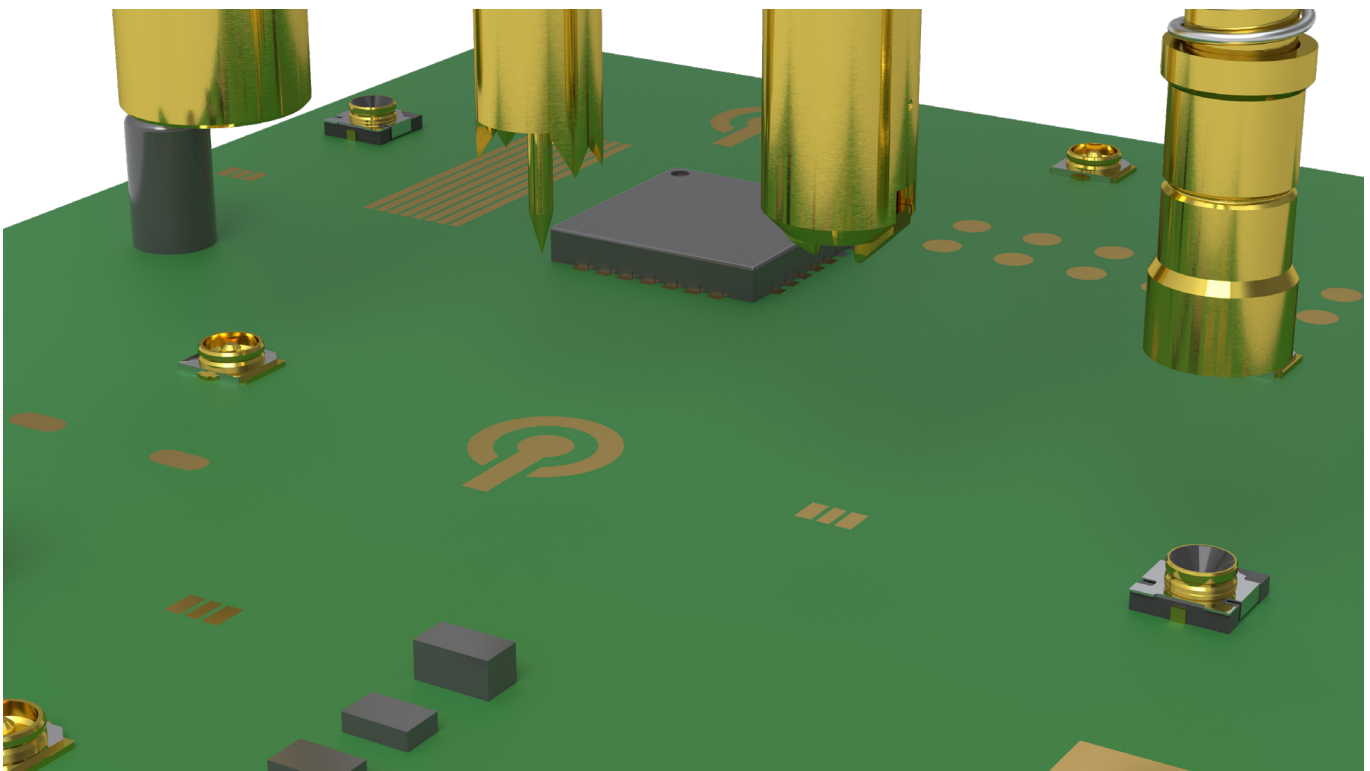
| DUT     | Material number | Material description |
|---------|-----------------|----------------------|
| FAKRA-F | 1051176         | HF83002B0004G490     |
| FAKRA-F | 1029428         | HF86002B0012G930     |
| FAKRA-F | 1037081         | HF86002B0012G930M    |
| FAKRA-M | 1037623         | HF66-0017            |
| FAKRA-M | 1050705         | HF83005B0003G540     |
| FAKRA-M | 1020923         | HF86005B0006G470     |
| FAKRA-M | 1038817         | HF86005B0006G470M    |
| FAKRA-M | 1033408         | HF86005B0026G550     |
| FAKRA-M | 1038942         | HF86005B0026G550M    |
| FAKRA-M | 1033407         | HF86005B0026G950     |
| FAKRA-M | 1035672         | HF86005B0026G950M    |
| HFM-F   | 1051503         | HF77-0004BG01-1      |
| HFM-F   | 1050858         | HF77-0004BG04-1      |
| HFM-F   | 1051683         | HF7711B0004G540      |
| HFM-M   | 1036171         | HF77-0001BG01-1      |
| HFM-M   | 1057696         | HF77-0001BG02-1      |
| HFM-M   | 1034901         | HF77-0001BG04-1      |
| HFM-M   | 1034900         | HF7716B0001G530      |
| H-MTD-M | 1051338         | HF77-0003BG01-1      |
| H-MTD-M | 1101813         | HF77-0003BG01-1K     |
| H-MTD-M | 1089316         | HF77-0003BG01-1WP    |
| H-MTD-M | 1082740         | HF77-0003BG02-1      |
| H-MTD-M | 1084015         | HF77-0003BG02-1K     |
| H-MTD-M | 1089789         | HF77-0003BG02-1WP    |
| H-MTD-M | 1050859         | HF77-0003BG04-1      |
| H-MTD-M | 1084014         | HF77-0003BG04-1K     |
| H-MTD-M | 1089897         | HF77-0003BG04-1WP    |
| HSD-F   | 1033153         | HF81912B0002G2020    |
| HSD-F   | 1039288         | HF81912B0007G2020    |
| HSD-F   | 1039269         | HF81912B0008G1920    |
| HSD-M   | 1012608         | HF81905B0001G1270    |
| HSD-M   | 1052668         | HF81914B1009G2020    |
| HSD-M   | 1035376         | HF81914S0004L1270    |
| HSD-M   | 1088117         | HF81914S0004L2020    |
| HSD-M   | 1090175         | HF81955B0010G1270    |
| HSD-M   | 1023277         | HF81955B1005G2000    |
| HSD-M   | 1034670         | HF81955B1006G2020    |

## APPLICATION AREAS FOR RF CONTACT PROBES



### **Communication**

For contacting switch connectors and PCB Pads used in the communication sector.



## HF66



### HF66 for switch-connectors

#### Contacting the smallest connectos

- Family specially designed to contact on all standard switch-connectors
- Special design enables contacting in small pitches
- Up to 18Ghz
- Optimised for long lifetime
- Easy and flexible mounting via flange
- Connection via mSMP or SMA
- Matching cables available

## HF05



### HF05 for miniaturised GSG-Pads

#### Contacting the smallest pitches

- HF05 designed to contact GSG-Pads with a Pitch down to 0,5mm (different pitches available)
- Up to 6Ghz
- Design like HF66-family
- Mounting via flange
- Connection via mSMP
- Matching cables available

## HF86o



### HF860 for PCB-Pads

#### Contacting the smallest pitches

- Special versions of HF860-family to contact standard PCB-Pads
- Up to 6Ghz
- Mounting via receptacle
- Connection via MCX
- Solutions available for all standard PCB-Pads
- Matching cables available

## RF CONTACT PROBES FOR COMMUNICATION

| DUT      | Material number | Material description |
|----------|-----------------|----------------------|
| HSC      | 1024462         | HF66-0006            |
| HSC      | 1024464         | HF66-0008            |
| JSC      | 1024458         | HF66-0002            |
| JSC      | 1024466         | HF66-0010            |
| JSC      | 1024468         | HF66-0012            |
| KSC      | 1024459         | HF66-0003            |
| KSC      | 1024461         | HF66-0005            |
| LSC      | 1024460         | HF66-0004            |
| LSC      | 1024467         | HF66-0011            |
| MHF5-KSC | 1031575         | HF66-0016            |
| MHF-U.FL | 1024470         | HF66-0014            |
| PCB      | 1024471         | HF05-0001            |
| PCB      | 1024472         | HF05-0002            |
| PCB      | 1090027         | HF83011B0005G500     |
| PCB      | 1021450         | HF86002B0008G530     |
| PCB      | 1038951         | HF86002B0008G530M    |
| PCB      | 1021449         | HF86002B0009G960     |
| PCB      | 1038964         | HF86002B0009G960M    |
| PCB      | 1033127         | HF86002B0025G960     |
| PCB      | 1039131         | HF86002B0025G960M    |
| PCB      | 1052669         | HF86002B0029G880     |
| PCB      | 1101325         | HF86002B0031G530     |
| PCB      | 1023017         | HF86018B0010G530     |
| PCB      | 1038941         | HF86018B0010G530M    |
| PCB      | 1031632         | HF86018B0010G930     |
| PCB      | 1038921         | HF86018B0010G930M    |
| PCB      | 1032689         | HF86018B0019G530     |
| PCB      | 1038337         | HF86018B0019G530M    |
| PCB      | 1032697         | HF86018B0020G530     |
| PCB      | 1038920         | HF86018B0020G530M    |
| PCB      | 1043726         | HF86018B0028G960     |
| SMP-M    | 1039136         | HF66-0018            |
| SW-D-F-G | 1024469         | HF66-0013            |
| SWD-SWF  | 1042572         | HF66-0075            |
| SWF      | 1029250         | HF66-0015            |
| SWG      | 1024463         | HF66-0007            |
| SWH      | 1024465         | HF66-0009            |
| SWJ      | 1024455         | HF66-0001            |
| SWJ      | 1057695         | HF66-0001U           |
| U.FL     | 1036633         | HF66-0043            |
| U.FL     | 1012584         | HF86005B0002G530     |
| U.FL     | 1038302         | HF86005B0002G530M    |



## APPLICATION AREAS FOR RF CONTACT PROBES



### **Industry**

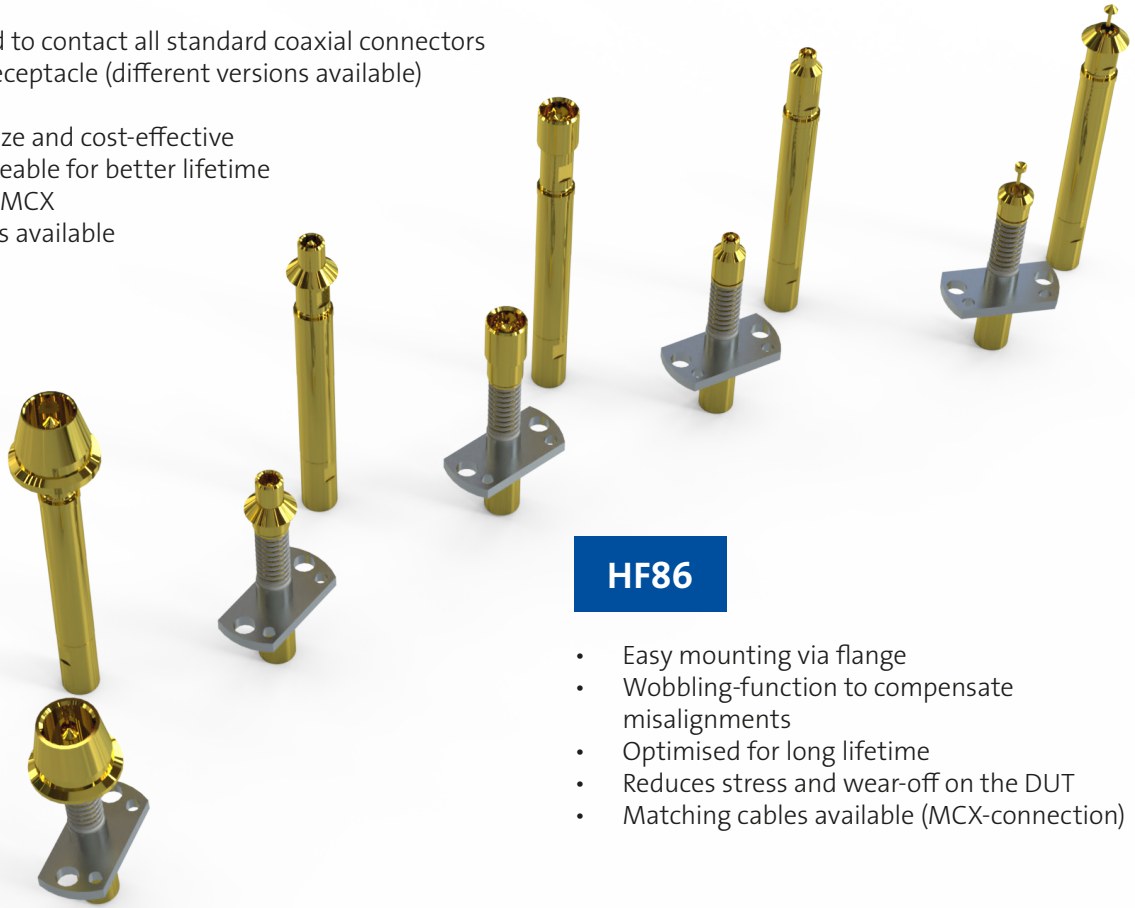
To be used in test fixtures for reliably testing on all standard coaxial connectors.



## RF CONTACT PROBES FOR INDUSTRY

### HF86o

- Family designed to contact all standard coaxial connectors
- Mounting via receptacle (different versions available)
- Up to 8Ghz
- Easy to customize and cost-effective
- Inner pin changeable for better lifetime
- Connection via MCX
- Matching cables available



### HF86

- Easy mounting via flange
- Wobbling-function to compensate misalignments
- Optimised for long lifetime
- Reduces stress and wear-off on the DUT
- Matching cables available (MCX-connection)

### HF83o



### HF830 for coaxial connectors For contacting in limited spaces

- Family designed to contact all standard coaxial connectors in limited spaces
- Short-versions of the HF860-family (same specs)
- Up to 8Ghz
- Mounting via receptacle (H830)

### HF89o



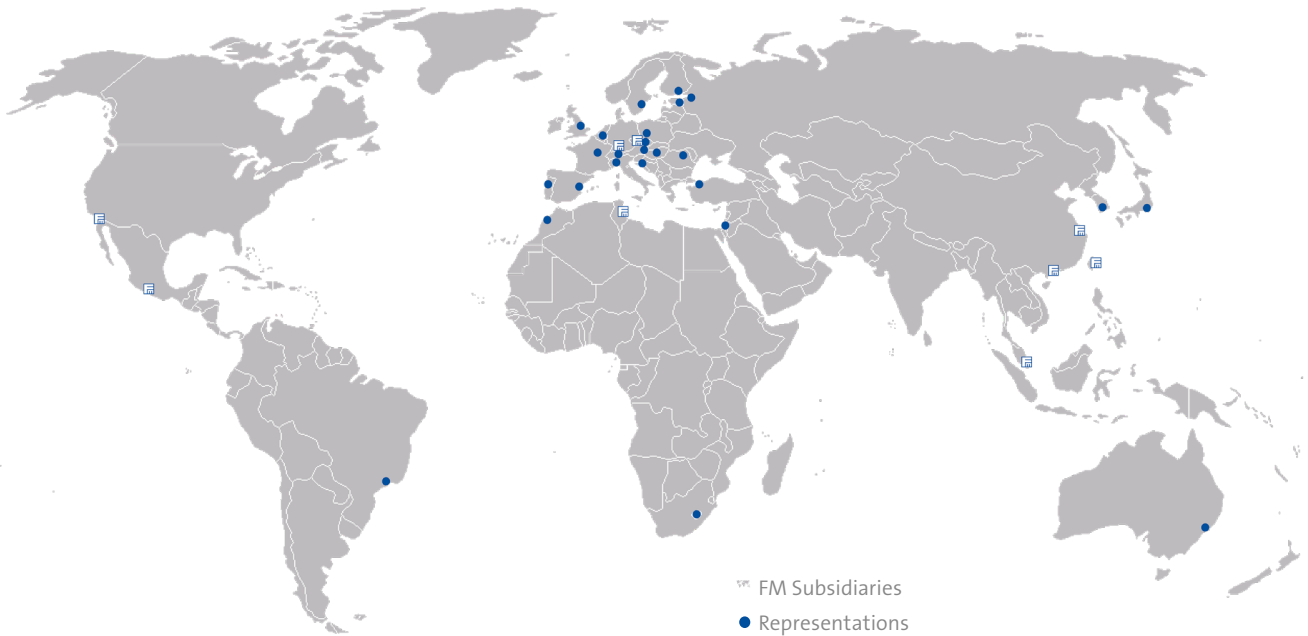
### HF890 for coaxial connectors Contacting at frequencies of up to 16Ghz


- RF-optimised versions of the HF860-family
- Up to 16Ghz
- Mounting via receptacle (same as HF860)
- Connection via SMP-connection


## RF CONTACT PROBES FOR INDUSTRY

| DUT          | Material number | Material description |
|--------------|-----------------|----------------------|
| 1,0-2,3-F    | 1032825         | HF86002B0021G530     |
| 1,0-2,3-F    | 1039114         | HF86002B0021G530M    |
| BMA-M        | 1023932         | HF86005B0011G530     |
| BMA-M        | 1039103         | HF86005B0011G530M    |
| BNC-F        | 1032634         | HF86002B0016G550     |
| BNC-F        | 1039082         | HF86002B0016G550M    |
| FME-M        | 1032933         | HF86005B0022G790     |
| FME-M        | 1038944         | HF86005B0022G790M    |
| GT13-M       | 1041700         | HF86005B0030G530M    |
| GT16-M       | 1032960         | HF86005B0023G530     |
| GT16-M       | 1038943         | HF86005B0023G530M    |
| MMBX-F       | 1032966         | HF86002B0024G530     |
| MMBX-F       | 1039120         | HF86002B0024G530M    |
| MMBX-F/SMA-F | 1042148         | HF89002B0002G910     |
| MMCX-F       | 1032011         | HF86002B0014G530     |
| MMCX-F       | 1039074         | HF86002B0014G530M    |
| MMPX-F       | 1042145         | HF89002B0001G900     |
| MSMP-M       | 1032010         | HF86005B0013G530     |
| MSMP-M       | 1039073         | HF86005B0013G530M    |
| MSMP-M       | 1051266         | HF89005B0003G930     |
| N-F          | 1033766         | HF86002B0027G430     |
| N-F          | 1039107         | HF86002B0027G430M    |
| QMA-F        | 1032350         | HF86002B0017G730     |
| QMA-F        | 1039110         | HF86002B0017G730M    |
| RF-M         | 1012588         | HF86005B0007G530     |
| RF-M         | 1039104         | HF86005B0007G530M    |
| R-SMA-F      | 1032627         | HF86005B0018G530     |
| R-SMA-F      | 1039071         | HF86005B0018G530M    |
| R-TNC-F      | 1036849         | HF86005B0015G450     |
| R-TNC-F      | 1039072         | HF86005B0015G450M    |
| SMA-F        | 1012583         | HF86002B0001G530     |
| SMA-F        | 1038913         | HF86002B0001G530M    |
| SMA-F        | 1033156         | HF86002B0001G990     |
| SMA-F        | 1038922         | HF86002B0001G990M    |
| SMB-F        | 1012587         | HF86002B0005G530     |
| SMB-F        | 1038930         | HF86002B0005G530M    |
| SMB-M        | 1043724         | HF83005B0002G520     |
| SMB-M        | 1012586         | HF86005B0004G530     |
| SMB-M        | 1039105         | HF86005B0004G530M    |
| SMC-M        | 1043723         | HF83005B0001G520     |
| SMC-M        | 1012585         | HF86005B0003G530     |
| SMC-M        | 1039106         | HF86005B0003G530M    |

# INTERNATIONALLY POSITIONED FOR YOU





 FEINMETALL GMBH | HERRENBERG, GERMANY  
 (+49) 7032 2001-0 | [info@feinmetall.com](mailto:info@feinmetall.com)

 FEINMETALL DE MEXICO | MEXICO  
 (+52) 55 2591 0629 | [info.mexico@feinmetall.com](mailto:info.mexico@feinmetall.com)

 FEINMETALL SHANGHAI | CHINA  
 (+86) 21 2898 6848 | [info@cn.feinmetall.com](mailto:info@cn.feinmetall.com)

FEINMETALL-OCT | HSINCHU COUNTY, TAIWAN  
 (+886) 3 560 15 66 | [info@tw.feinmetall.com](mailto:info@tw.feinmetall.com)

 FEINMETALL CZ | CZECH REPUBLIC  
 (+42) 0491 470-511 | [info@cz.feinmetall.com](mailto:info@cz.feinmetall.com)

 FEINMETALL USA LLC | SAN JOSE, USA  
 (+1) 408 432 7500 | [info.us@feinmetall.com](mailto:info.us@feinmetall.com)

 FEINMETALL SINGAPORE PTE LTD | SINGAPORE  
 (+65) 3152 9103 | [info@sg.feinmetall.com](mailto:info@sg.feinmetall.com)

 FEINMETALL TUNISIE | TUNISIA  
 (+216) 71 182 377 | [info@tn.feinmetall.com](mailto:info@tn.feinmetall.com)

You have test demands with specific requirements and you need a tailor-made solution?

In our catalogues you find contact probes for:

- **Board test**
- **Wire harness test**
- **High current and limited space**
- **Coaxial applications and fine pitch**



**FEINMETALL**  
 Contact Technologies

[www.feinmetall.com](http://www.feinmetall.com)

