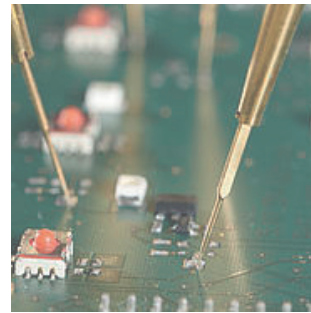
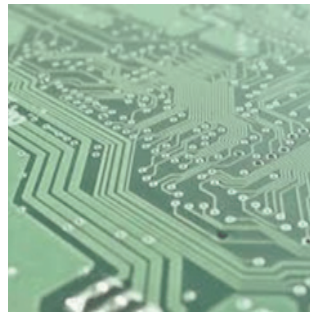


# FLYING PROBES

- FOR ADAPTERLESS TESTING OF PCB'S
- FOR LONG LIFE APPLICATIONS
- HIGH REPEATABILITY



# FL177

**NEW**

## Contacting of assembled and unassembled PCB's

<b>Centers (mm/mil)</b>	4,50 / 177
<b>Current</b>	8,0 A
<b>R typical</b>	30 mOhm
<b>Temperature</b>	-45°C...+100°C

### Spring Force (cN ±20%)

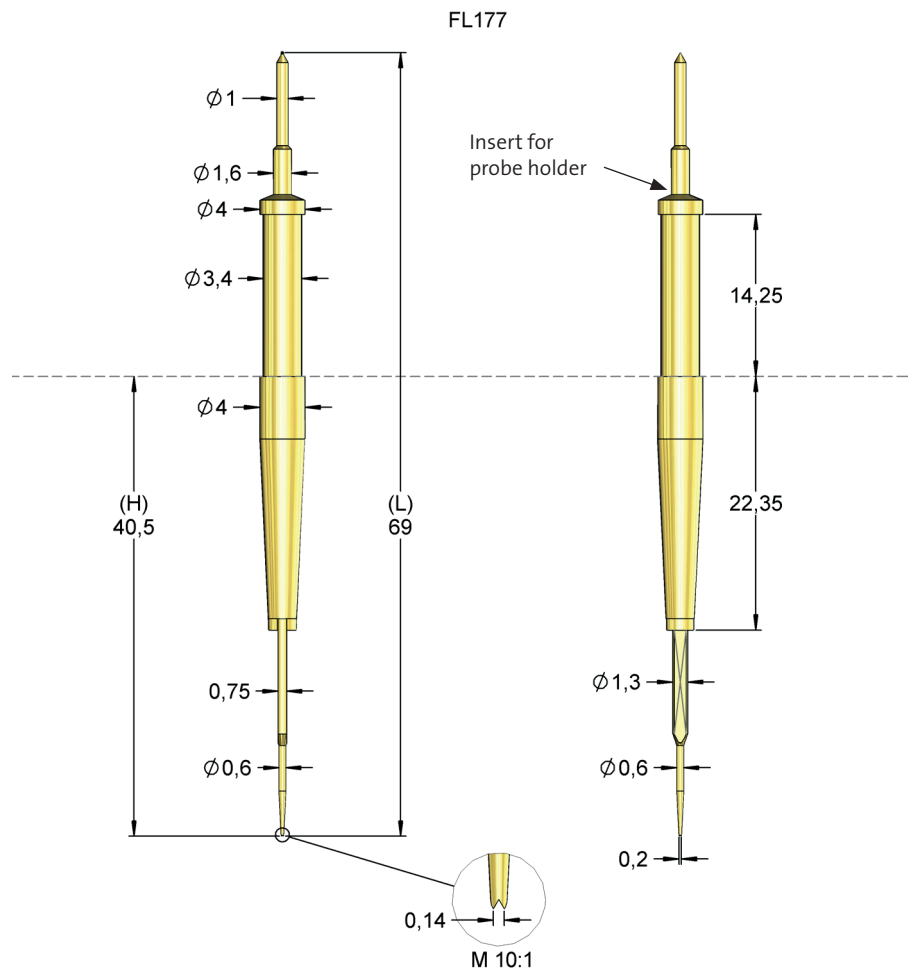
Version	Preload	Nominal
Standard	24	40
Standard	60	100

### Travel (mm)

Version	Nominal	Maximum
Standard	2,0	10,0

### Materials and Plating

Plunger	Steel, Longtime gold plated
Barrel	Brass, gold plated
Spring	Music Wire, silver plated



Order Code	Description	Tip Style	TS-#	Material	Ø in mm	Plating
1095118	FL11829So2oL10oE38C111-2		29	S	0,20	L
1092272	FL17703So3oL10oA211		03	S	0,30	L
1092266	FL1771oSo5oL10oA741		10	S	0,50	L
1092274	FL17729So2oL04oA112		29	S	0,20	L
1092271	FL17729So2oL10oA111		29	S	0,20	L
1095396	FL17729So2oL10oB111-2		29	S	0,20	L
1092269	FL1773oSo6oL10oA611		30	S	0,60	L
1092273	FL1773oSo7oL10oA621		30	S	0,70	L

In the manufacture of electronic circuit boards, FM Flying Probes are used to test both assembled and unassembled circuit boards.

Due to the technical design, the probe is highly accurate and contacts component pins and pads on assemblies and PCBs. With the low internal resistance of the FM Flying Probes, a stable electrical test can be performed very well.

The **FL177 series** offers several advantages especially for this sensitive application area:

- High lifetime up to > 2mio. Contacts
- Anti-rotation device allows a high repeatability of the contacting
- Optimized tip styles on smallest pitch
- Robust and low-wear contact heads and plungers
- Low and constant resistances

